

## Model T-3A Yacht Horn

Kahlenberg Chimetone Air Horns all utilize more than one projector or “trumpet” in their design. These projectors each produce a different fundamental frequency which combine to produce powerful, distinctive, musical chords. To hear a Chimetone Air Horn is to realize that the sound of a vessel can be one of its most impressive aspects. The Model T-3A Air Horn is designed for the most discriminating yachtsman. It is made entirely of bronze and brass, and is triple plated for a deep chrome finish.



\*Shown w/optional  
M-300 Light

### TECHNICAL DATA

Fundamental Frequency: 311, 261, and 208 Hz

S.P.L. : (1/3 Octave @ 1 Meter): 135 dB

Air Consumption:

52 C.F.M. @ 100 p.s.i., 25 l/s @ 7 bar

Air Pressure Required:

100 to 250 p.s.i., 7 to 17 bar  
(Higher pressures with optional regulators)

Electrical Power Required:

Any standard A.C. or D.C. Voltage

Material: Cast Bronze and Spun Brass

Net Weight: 75 lbs., 34 kg.

Finish:

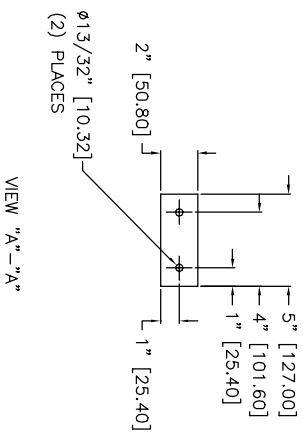
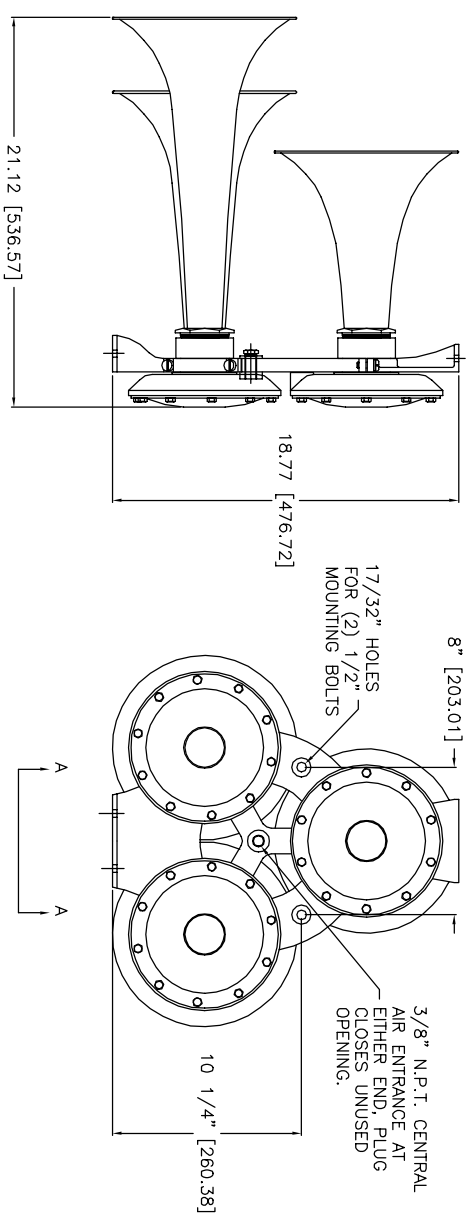
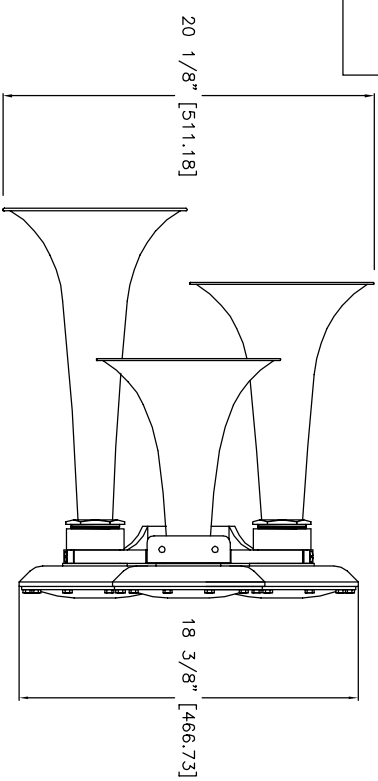
White Powdercoat or Chrome Plate


Dimensions:

21.25" x 18.5" x 19" (540x470x483)  
(dimensions without optional light)

- **FOR VESSELS LESS THAN 75 METERS IN LENGTH**
- **MEETS OR EXCEEDS IMO REQUIREMENTS**
- **LOW AIR CONSUMPTION, OPERATES ON A WIDE RANGE OF AIR PRESSURE**
- **HIGHLY RELIABLE, VIRTUALLY NO MAINTENANCE**
- **OPTIONAL DIRECTLY MANIFOLDED MANUAL/SOLENOID VALVES, AIR STRAINER AND MANEUVERING LIGHT**

## Conforming to International Maritime Regulations For Vessels Less Than 75 Meters in Length.



<b>TECHNICAL DATA</b> Frequency: 208, 311 Hz Sound Pressure Level (1/3 octave at 1 meter): 142.2dB Sound Pressure Level (dB(A) at 1 meter): 135dB Air Consumption: appx. 78 C.F.M. @ 150 P.S.I. Air Pressure Req: 100 To 250 P.S.I. Electric Power: Any Standard A.C. or D.C. voltage Material: Spun Brass & Cast Bronze Net Weight: 75 Lbs. Shipping Weight: 132 Lbs.			
<b>Price</b> ( . )		KAHLENBERG BRO O. TWO RIVERS, W.I.	
<b>DATE</b>		<b>OUTLINE DIMENSIONS</b> <b>MODEL T-3A, FIG. 313</b> <b>AIRHORN</b>	
<b>DRWG. NO.</b>		<b>REV.</b>	
04/12/01		3-5446	
		A EMK	