

## Model KDT-123 Yacht Horn

Kahlenberg Chimetone Air Horns all utilize more than one projector or “trumpet” in their design. These projectors each produce a different fundamental frequency which combine to produce powerful, distinctive, musical chords. To hear a Chimetone Air Horn is to realize that the sound of a vessel can be one of its most impressive aspects. The Model KDT-123 Air Horn is designed for the most discriminating yachtsman. It is made entirely of bronze and brass, and is triple plated for a deep chrome finish.



\*Shown w/optional  
M-300 Light

### TECHNICAL DATA

Fundamental Frequencies: 142 to 416 Hz  
S.P.L. (1/3 Octave @ 1 Meter): 134 dB

Air Consumption:

91 C.F.M. @ 100 p.s.i., 43 l/s @ 10 bar

Air Pressure Required:

100 to 250 p.s.i., 7 to 17 bar  
(Higher pressures with optional regulators)

Electrical Power Required:

Any standard A.C. or D.C. Voltage

Material: Cast Bronze, Spun Brass

Net Weight: 110 lbs., 50 kg.

Finish:

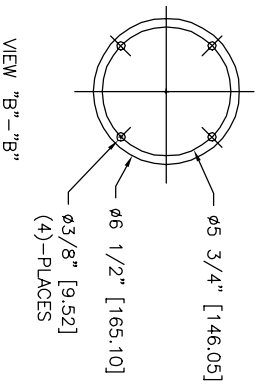
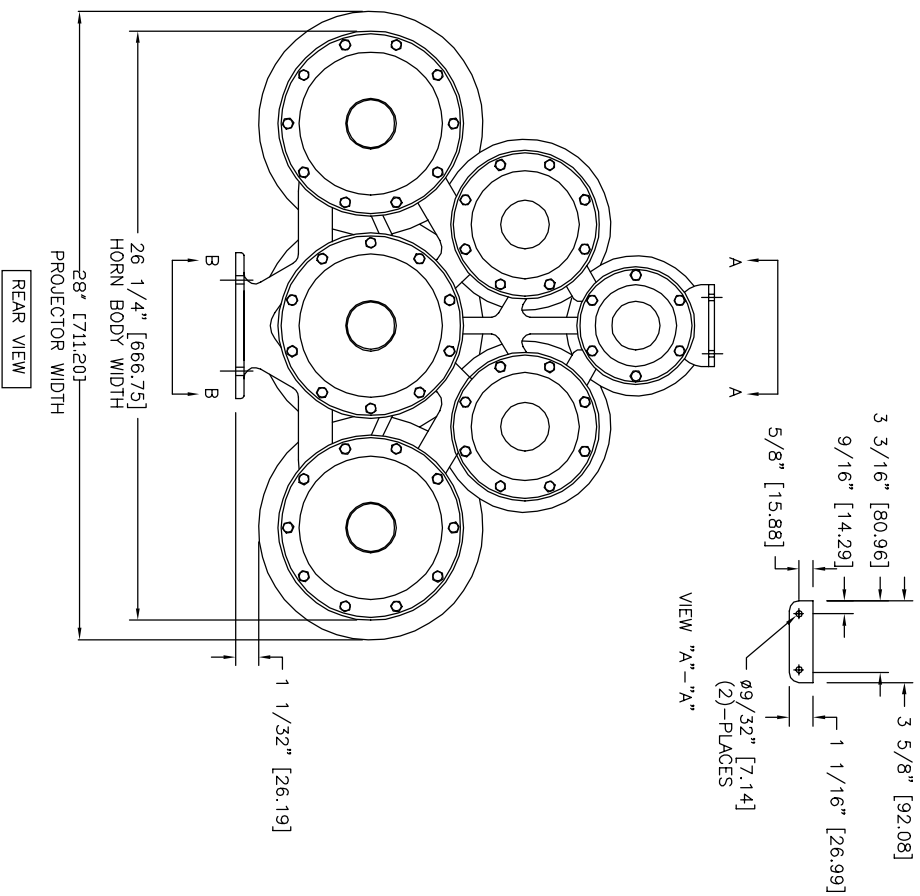
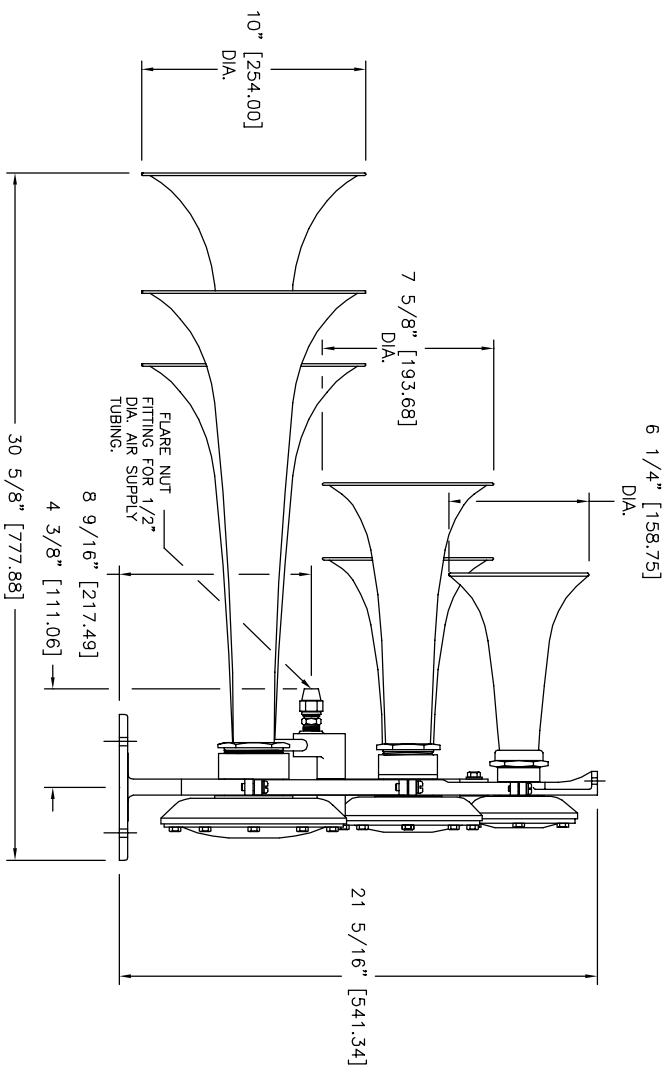
Chrome Plate or White Powdercoat

Dimensions:

30.75" x 28" x 21.5" (781x711x546)

- **REQUIRES NO TUNING OR ADJUSTMENT FOR PRESSURES UP TO 250 P.S.I.**
- **BRONZE AND SPUN BRASS, TRIPLE CHROME PLATED OR WHITE POWDERCOAT**
- **HIGHLY RELIABLE, SIMPLE MECHANICAL DESIGN**
- **MEETS OR EXCEEDS IMO/SOLAS REQUIREMENTS**
- **ONE OF A KIND SOUND FOR THE MOST EXCEPTIONAL YACHTS**

*Conforming to International Maritime Regulations  
For Vessels Under 75 Meters in Length.*



**TECHNICAL DATA**  
 Frequency: 142 Hz, 164 Hz, 208 Hz, 284 Hz,  
 349 Hz, & 416 Hz  
 Sound Pressure Level (dB(A) at 1 meter): 140db  
 Sound Pressure Level (1/3 octave at 1 meter): 134db  
 Air Consumption: appx. 135.6 C.F.M. @ 150 P.S.I.  
 Air Pressure Req: 100 To 250 P.S.I.  
 Electric Power: N/A  
 Material: Spun Brass & Cast Bronze  
 Net Weight: 110 Lbs.  
 Shipping Weight: 219 Lbs.

Price: || )

		KAHLEBERG	
		S.A.	
<b>OUTLINE DIMENSIONS</b> <b>MODEL KDT-123</b> <b>6 TRUMPET AIRHORN</b>			
DATE	DRWG. NO.	REV.	
07/25/96	3-5683	B	EMK